

# B

## Airports Not Meeting Separation Standards

This appendix presents diagrams of airports not meeting separation standards detailed in the Federal Aviation Administration (FAA) Advisory Circular 150-5300-13A: *Airport Design*. Separation standards analyzed as part of the Kentucky Statewide Aviation System Plan (SASP) include the following:

- Runway centerline to parallel taxiway centerline
- Runway centerline to holding position
- Runway centerline to aircraft parking area

Separation distance standards vary based on an airport's runway design code (RDC). All images in this appendix are courtesy of Google Maps. Note that the analysis in this appendix is meant only as an overview of issues at Kentucky airports, and is not meant to replace detailed engineering work conducted as part of airport master planning.

All markings in red on the airport images show separation measurements that do not meet FAA standards. Markings in blue on the airport images show separation measurements that do meet FAA standards.

Associated City: Ashland

Airport: Ashland Regional (DWU)

Runway Design Code: B-II

Separation Issues:

- Runway centerline to hold position: Hold positions are 175 feet vice 200 feet.
- Runway centerline to taxiway centerline: Taxiway separation is 200 feet vice 240 feet.
- Runway centerline to aircraft parking area: Aircraft parking separation is 220 feet vice 250 feet.



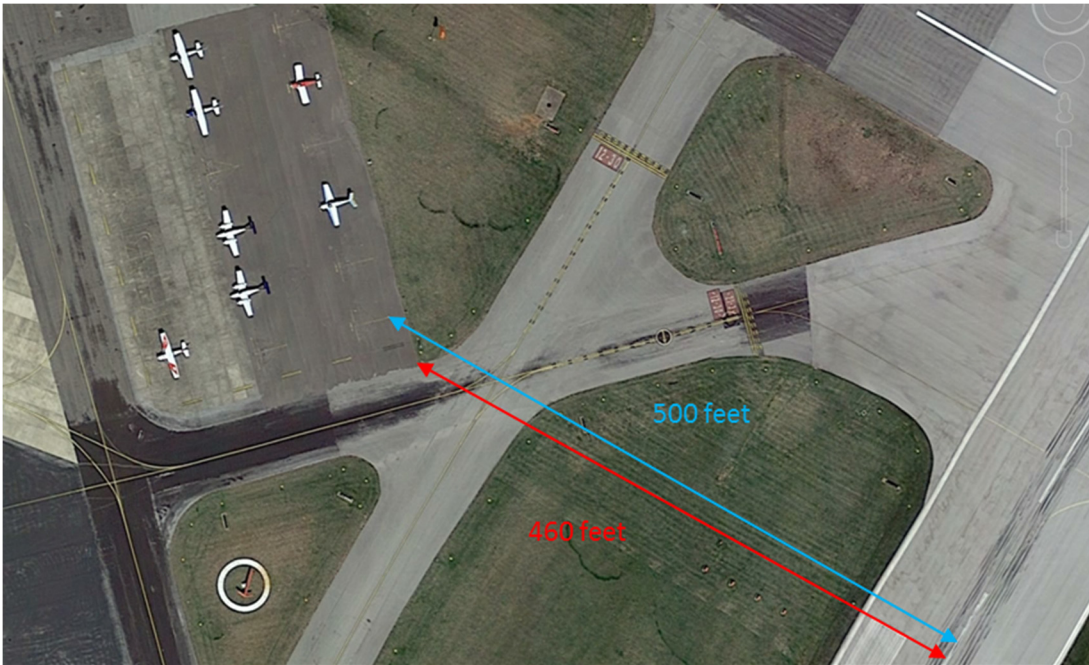
Associated City: Bowling Green

Airport: Bowling Green-Warren County Regional (BWG)

Runway Design Code: C-III

Separation Issues:

- Runway centerline to aircraft parking area: Corner of aircraft parking separation is 460 feet vice 500 feet. Unclear if that corner of the parking area is marked as a taxilane, but the closest marked aircraft parking area remains under 500 feet regardless.



Associated City: Campbellsville

Airport: Taylor County (AAS)

Runway Design Code: B-II

Separation Issues:

- Runway centerline to taxiway centerline: Taxiway separation is 200 feet vice 240 feet for a portion of taxiway.



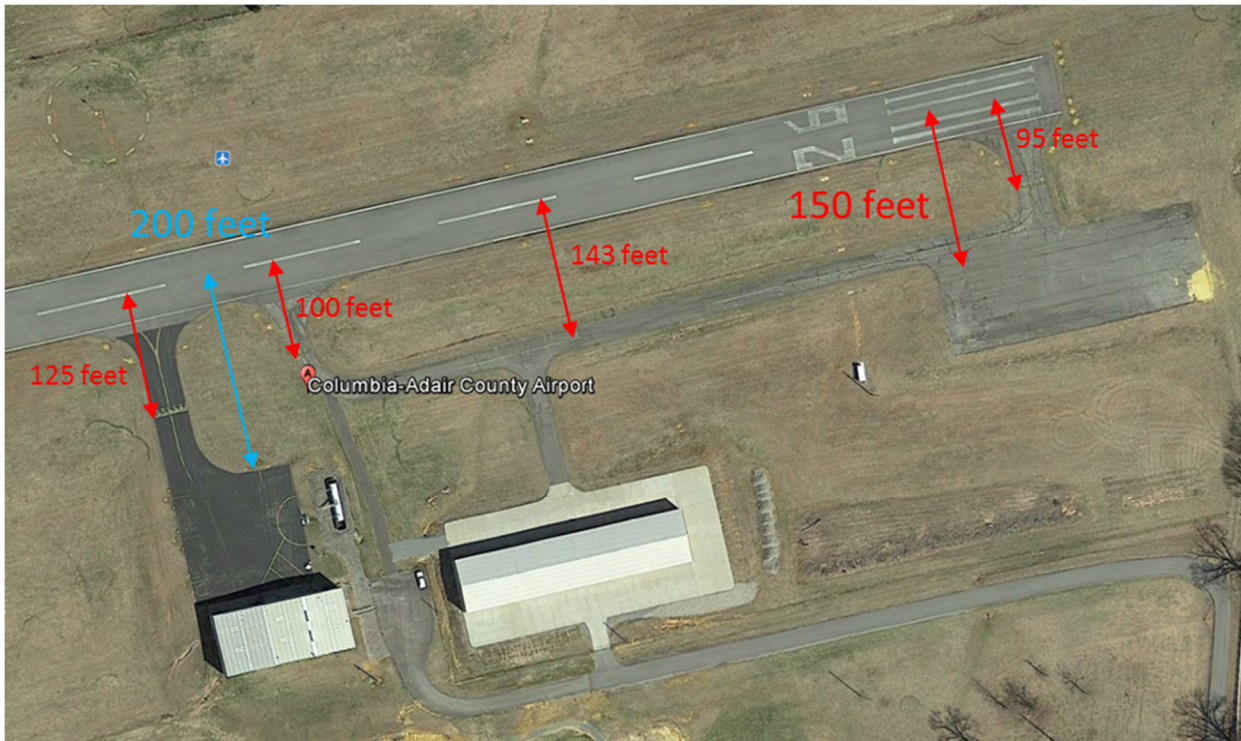
Associated City: Columbia

Airport: Columbia-Adair County (I96)

Runway Design Code: B-I

Separation Issues:

- Runway centerline to hold position: Hold positions vary and are less than 200 feet.
- Runway centerline to taxiway centerline: Taxiway separation is less than 225 feet.
- Runway centerline to aircraft parking area: Old aircraft parking area is 150 feet vice 200 feet.



Associated City: Cynthiana

Airport: Cynthiana-Harrison County (018)

Runway Design Code: B-I

Separation Issues:

- Runway centerline to hold position: North side hold positions are 125 feet vice 200 feet.
- Runway centerline to aircraft parking area: Parking pad separation is 163 feet vice 200 feet.



Associated City: Dawson Springs

Airport: Tradewater (8M7)

Runway Design Code: A-I Small

Separation Issues:

- Runway centerline to hold position: No visible hold positions showing on aerial imagery.



Associated City: Gilbertsville

Airport: Kentucky Dam Village State Resort Park (M34)

Runway Design Code: B-II

Separation Issues:

- Runway centerline to hold position: Hold positions vary and none are at 200 feet. No hold position markings at east end of runway.





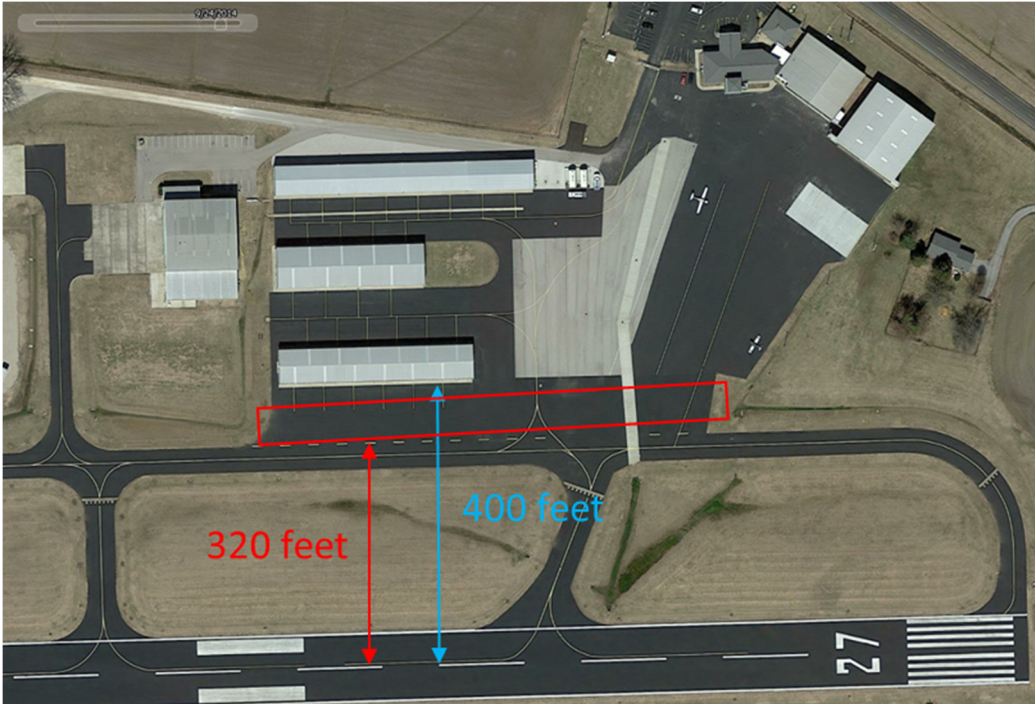
Associated City: Henderson

Airport: Henderson City-County (EHR)

Runway Design Code: C-II

Separation Issues:

- Runway centerline to aircraft parking area: Potential aircraft parking in front of hangars is 320 feet from runway centerline vice 400 feet.



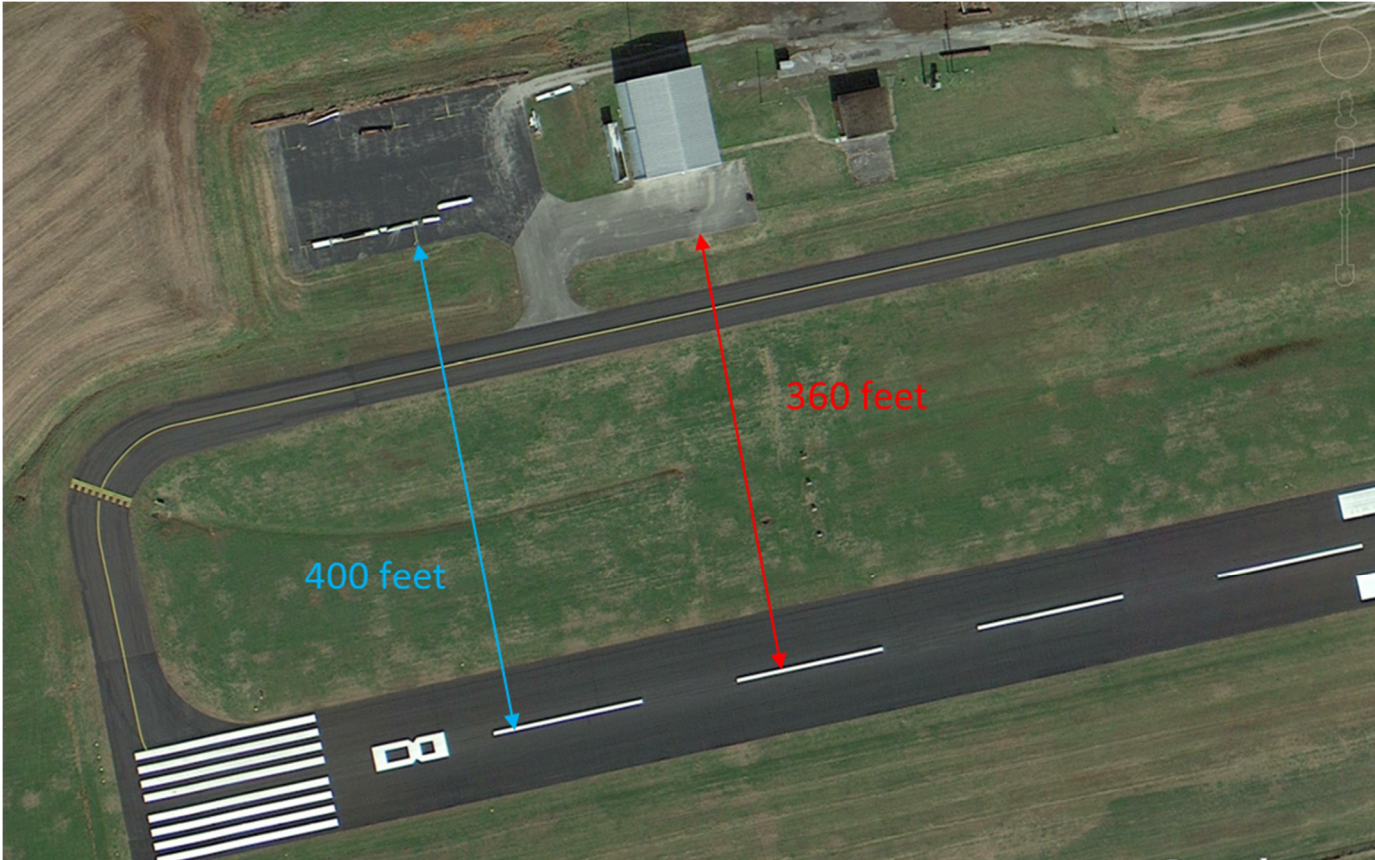
Associated City: Hopkinsville

Airport: Hopkinsville-Christian County (HVC)

Runway Design Code: C-II

Separation Issues:

- Runway centerline to aircraft parking area: Ramp space in front of hangar (potential aircraft parking) is 360 feet from runway vice 400 feet.



Associated City: Jackson  
Airport: Julian Carroll (JKL)  
Runway Design Code: B-I  
Separation Issues:

- Runway centerline to hold position: No hold position visible on aerial imagery.



Associated City: Leitchfield

Airport: Grayson County (M20)

Runway Design Code: A-I

Separation Issues:

- Runway centerline to hold position: Hold position is 125 feet vice 200 feet.



Associated City: Liberty

Airport: Liberty-Casey County (I53)

Runway Design Code: A-I

Separation Issues:

- Runway centerline to hold position: hold position is 125 feet vice 200 feet.



Associated City: Mayfield

Airport: Mayfield Graves County (M25)

Runway Design Code: B-II

Separation Issues:

- Runway centerline to hold position: Hold position by ramp is 188 feet vice 200 feet.
- Runway centerline to aircraft parking area: Aircraft parking separation is 185 feet vice 250 feet.



Associated City: Middlesboro

Airport: Middlesboro-Bell County (1A6)

Runway Design Code: B-II

Separation Issues:

- Runway centerline to hold position: Hold positions are 125 feet vice 200 feet.
- Runway centerline to taxiway centerline: Taxiway separation is 225 feet vice 240 feet.



Associated City: Murray

Airport: Kyle-Oakley Field (CEY)

Runway Design Code: C-II

Separation Issues:

- Runway centerline to aircraft parking area: Aircraft parking separation is 390 feet vice 400 feet.





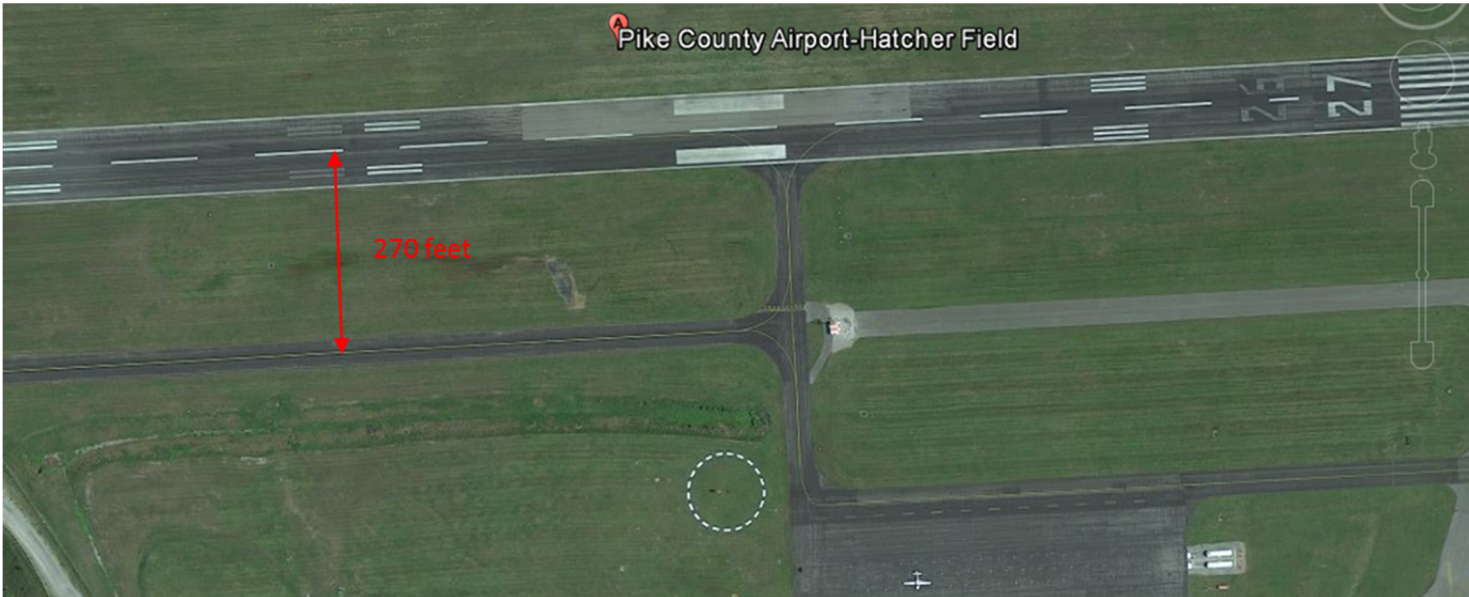
Associated City: Pikeville

Airport: Pikeville – Pike County Regional (PBX)

Runway Design Code: C-II

Separation Issues:

- Runway centerline to taxiway centerline: Taxiway separation is 270 feet vice 300 feet.



Associated City: Pine Knot

Airport: McCreary County (18I)

Runway Design Code: B-II

Separation Issues:

- Runway centerline to hold position: No visible hold positions showing on aerial imagery.



Associated City: Princeton

Airport: Princeton-Caldwell County (2M0)

Runway Design Code: B-II

Separation Issues:

- Runway centerline to hold position: Hold positions are 125 feet vice 200 feet.



Associated City: Providence

Airport: Providence-Webster County (8M9)

Runway Design Code: B-I Small

Separation Issues:

- Runway centerline to hold position: Hold position is 115 feet vice 125 feet.

